

BATTERY INFORMATION & WARNING

Before replacing batteries, read the enclosed BATTERY INFORMATION/ WARNING insert in your original packaging. For additional battery safety, handling, and product information, visit www.surefire.com/batteries.

MAINTENANCE

Use a clean, dry cloth to wipe off body and window. Periodically clean and lubricate threads. Apply a thin coat of non-migrating, silicon-based lubricant to O-rings (do not use petroleum-based lubricants, which can harm O-rings). For additional tips on maintaining your SureFire illumination tool, visit www.surefire.com/faqs-maintenance.

ACCESSORIES

SureFire makes a full line of accessories for most of its illumination tools. For a complete listing, visit www.surefire.com/partsaccessories.

THE SUREFIRE NO-HASSLE GUARANTEE

We'll do what it takes to keep your SureFire gear running smoothly. SureFire warrants that if you — our customer — purchase one of our products, and we determine that it is defective in material and/or workmanship during your lifetime, we will repair or replace it — no hassle!

Our warranty does not cover consumables or normal wear-and-tear — things like batteries draining, headbands and headpads wearing out, ink cartridges running out, and switches wearing out — or damage resulting from abuse, alterations, unauthorized repairs, or use contrary to SureFire's user manuals.

Should you need a replacement product, SureFire reserves the right to replace an obsolete product with a current production, like model. In the event that any issue with a SureFire product is not covered under this warranty SureFire can arrange to have the product repaired for a reasonable fee.

STANDARD DISCLAIMER

Except as specified above or prohibited by applicable law: all express or implied conditions and warranties, including, without limitation, any implied warranty or condition of merchantability or fitness for a particular purpose, or accuracy of any informational content, are hereby excluded and disclaimed by SureFire; and in no event will SureFire be liable for any special, direct, indirect, consequential, incidental or punitive damages howsoever arising and regardless of the theory of liability, even if advised of the possibility of such damages. Products, prices, availability, specifications, and offers are subject to change or cancellation at any time without notice.

WARRANTY CLAIMS

For claims, contact Customer Service at 714-545-9444 to obtain a Return Merchandise Authorization number (RMA#). Then package the unit carefully and send to (no CODs):

SureFire, LLC.
Repairs Department, RMA# _____
17680 Newhope Street, Suite B
Fountain Valley, CA 92708

SureFire will pay any reasonable shipping costs to return the unit to you.

Revision A 8-2018
71-01-1073
M952V-BK, M952V-TN

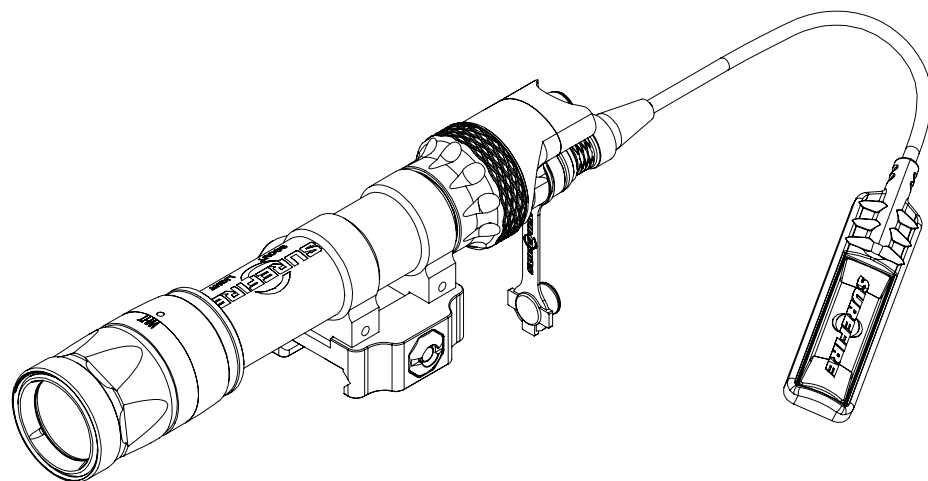


M952V

WHITE-LIGHT / INFRARED LED WEAPONLIGHT

M952V-BK

M952V-TN



SPECS	M952V	
	OUTPUT	WH: 350 lumens IR: 120 mW
	RUNTIME	WH: 2.5 hours IR: 16.75 hours
	WEIGHT	7.4 oz (209 g)
	LENGTH	6.13 in (15.6 cm)
	BEZEL DIAMETER	1.06 in (2.7 cm)

All performance claims tested to ANSI/NEMA FL1-2009 Standard.

KIT CONTENTS:

- M952V Weapon Light
- DS07 Tape-switch
- 123A lithium batteries (Two included)

INITIAL ACTIVATION OF M952V WEAPON LIGHT

The M952V ships pre-loaded with batteries and the locking LED head set to the “off” disable setting, in order to prevent accidental activation during shipping. Prior to activating the light for the first time, the LED head must be unlocked and set to either the white (WH) or infrared (IR) position as described in the **SELECTING LED MODE** section of this manual.

MOUNTING TO WEAPON

⚠ WARNING

ALWAYS confirm weapon is unloaded and on SAFE before attempting installation.

M-AD-SF THROW LEVER MOUNT

1. Press lock button to unlock the mount and open the lever 180°.
2. Place WeaponLight onto the handguard and close the lever.
3. The correct amount of tension is when only one hand is needed to swing the level closed.
4. To adjust lever tension, open the lever and push the lever towards the base. The nut will protrude on the opposite side. Turn the nut right or left one to two flats per time to make the necessary adjustment and retest the tension.

LIGHT OPERATION

SWITCH HOUSING

DS00: Partially press for momentary activation; click for constant-on.

REMOTE TAPE SWITCH

ST07: Insert plug into the receptacle of the DS00. Press pressure remote tape switch for momentary activation.

MULTI-SPECTRUM OUTPUT SELECTION

Rotate bezel selector ring clockwise to select white-light or counterclockwise to select infrared.

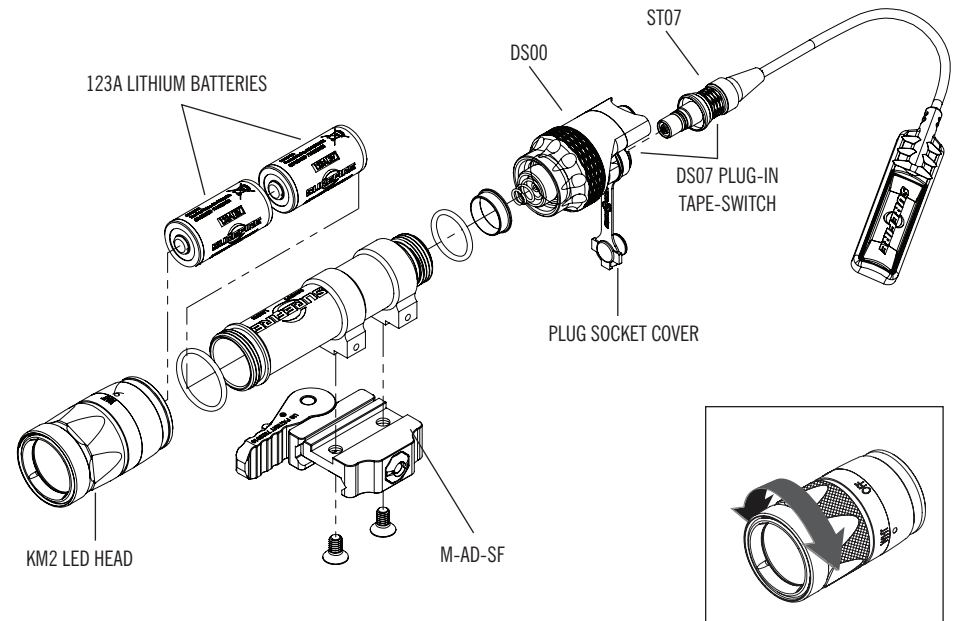
BATTERY INSTALLATION

⚠ WARNING

Use of substandard batteries can cause injury or property damage. Visit www.surefire.com/batterysafety.

1. Remove the LED head by unscrewing it counterclockwise and remove depleted batteries.
2. Insert fresh batteries with the positive (+) terminal(s) facing forward toward the head.

- WARNING:** Do not mix depleted and new batteries
3. Screw LED head back on clockwise until hand tight.



(FIGURE 1)